



Microsoft®

# Excel 2019 Advanced

## Quick Reference Guide

### PivotTable Elements

The screenshot shows an Excel spreadsheet with a PivotTable and the PivotTable Fields task pane. The PivotTable is located in cells B3:D8. The Fields pane is on the right, showing the following layout:

- Filters:** Name
- Columns:** Destination
- Rows:** Months, Date
- Values:** Sum of Tickets

Labels in the image include: Active PivotTable, Search PivotTable Fields, Fields Pane Options, Tools Menu, Field List, and PivotTable Field Areas.

### PivotTable Layout

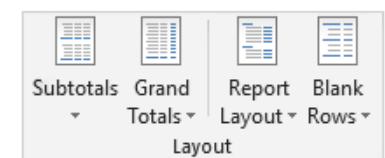
#### PivotTable Fields Pane

The PivotTable Fields pane controls how data is represented in the PivotTable. Click anywhere in the PivotTable to activate the pane. It includes a Search field, a scrolling list of fields (these are the column headings in the data range used to create the PivotTable), and four areas in which fields are placed. These four areas include:

- Filters:** If a field is placed in the Filters area, a menu appears above the PivotTable. Each unique value from the field is an item in the menu, which can be used to filter PivotTable data.
- Column Labels:** The unique values for the fields placed in the Columns area appear as column headings along the top of the PivotTable.
- Row Labels:** The unique values for the fields placed in the Rows area appear as row headings along the left side of the PivotTable.
- Values:** The values are the “meat” of the PivotTable, or the actual data that’s calculated for the fields placed in the rows and/or columns area. Values are most often numeric calculations.

Not all PivotTables will have a field in each area, and sometimes there will be multiple fields in a single area.

#### The Layout Group



**Subtotals:** Show or hide subtotals and specify their location in the PivotTable.

**Grand Totals:** Add or remove grand total rows for columns and/or rows.

**Report Layout:** Adjust the report layout to show in compact, outline, or tabular form.

**Blank Rows:** Emphasize groups of data by manually adding blank rows between grouped items.

#### PivotTables

**Create a PivotTable:** Select the data range to be used by the PivotTable. Click the **Insert** tab on the ribbon and click the **PivotTable** button in the Tables group. Verify the range and then click **OK**.

**Add Multiple PivotTable Fields:** Click a field in the field list and drag it to one of the four PivotTable areas that contains one or more fields.

**Filter PivotTables:** Click and drag a field from the field list into the Filters area. Click the field’s list arrow above the PivotTable and select the value(s) you want to filter.

**Group PivotTable Values:** Select a cell in the PivotTable that contains a value you want to group by. Click the **Analyze** tab on the ribbon and click the **Group Field** button. Specify how the PivotTable should be grouped and then click **OK**.

**Refresh a PivotTable:** With the PivotTable selected, click the **Analyze** tab on the ribbon. Click the **Refresh** button in the Data group.

**Format a PivotTable:** With the PivotTable selected, click the **Design** tab. Then, select the desired formatting options from the PivotTable Options group and the PivotTable Styles group.

#### PivotCharts

**Create a PivotChart:** Click any cell in a PivotTable and click the **Analyze** tab on the ribbon. Click the **PivotChart** button in the Tools group. Select a PivotChart type and click **OK**.

**Modify PivotChart Data:** Drag fields into and out of the field areas in the task pane.

**Refresh a PivotChart:** With the PivotChart selected, click the **Analyze** tab on the ribbon. Click the **Refresh** button in the Data group.

**Modify PivotChart Elements:** With the PivotChart selected, click the **Design** tab on the ribbon. Click the **Add Chart Element** button in the Chart Elements group and select the item(s) you want to add to the chart.

**Apply a PivotChart Style:** Select the PivotChart and click the **Design** tab on the ribbon. Select a style from the gallery in the Chart Styles group.

**Update Chart Type:** With the PivotChart selected, click the **Design** tab on the ribbon. Click the **Change Chart Type** button in the Type group. Select a new chart type and click **OK**.

**Enable PivotChart Drill Down:** Click the **Analyze** tab. Click the **Field Buttons** list arrow in the Show/Hide group and select **Show Expand/Collapse Entire Field Buttons**.

## Macros

**Enable the Developer Tab:** Click the **File** tab and select **Options**. Select **Customize Ribbon** at the left. Check the **Developer** check box and click **OK**.

**Record a Macro:** Click the **Developer** tab on the ribbon and click the **Record Macro** button. Type a name and description then specify where to save it. Click **OK**. Complete the steps to be recorded. Click the **Stop Recording** button on the Developer tab.

**Run a Macro:** Click the **Developer** tab on the ribbon and click the **Macros** button. Select the macro and click **Run**.

**Edit a Macro:** Click the **Developer** tab on the ribbon and click the **Macros** button. Select a macro and click the **Edit** button. Make the necessary changes to the Visual Basic code and click the **Save** button.

**Delete a Macro:** Click the **Developer** tab on the ribbon and click the **Macros** button. Select a macro and click the **Delete** button.

**Macro Security:** Click the **Developer** tab on the ribbon and click the **Macro Security** button. Select a security level and click **OK**.

## Troubleshoot Formulas

### Common Formula Errors:

- #####** - The column isn't wide enough to display all cell data.
- #NAME?** - The text in the formula isn't recognized.
- #VALUE!** - There is an error with one or more formula arguments.
- #DIV/0** - The formula is trying to divide a value by 0.
- #REF!** - The formula references a cell that no longer exists.

**Trace Precedents:** Click the cell containing the value you want to trace and click the **Formulas** tab on the ribbon. Click the **Trace Precedents** button to see which cells affect the value in the selected cell.

Jan	Feb	Total
6,010	7,010	13,020

**Error Checking:** Select a cell containing an error. Click the **Formulas** tab on the ribbon and click the **Error Checking** button in the Formula Auditing group. Use the dialog to locate and fix the error.

**The Watch Window:** Select the cell you want to watch. Click the **Formulas** tab on the ribbon and click the **Watch Window** button. Click the **Add Watch** button. Ensure the correct cell is identified and click **Add**.

**Evaluate a Formula:** Select a cell with a formula. Click the **Formulas** tab on the ribbon and click the **Evaluate Formula** button.

## Advanced Formatting

**Customize Conditional Formatting:** Click the **Conditional Formatting** button on the Home tab and select **New Rule**. Select a rule type, then edit the styles and values. Click **OK**.

**Edit a Conditional Formatting Rule:** Click the **Conditional Formatting** button on the Home tab and select **Manage Rules**. Select the rule you want to edit and click **Edit Rule**. Make your changes to the rule. Click **OK**.

**Change the Order of Conditional Formatting Rules:** Click the **Conditional Formatting** button on the Home tab and select **Manage Rules**. Select the rule you want to re-sequence. Click the **Move Up** or **Move Down** arrow until the rule is positioned correctly. Click **OK**.

## Analyze Data

**Goal Seek:** Click the **Data** tab on the ribbon. Click the **What-If Analysis** button and select **Goal Seek**. Specify the desired value for the given cell and which cell can be changed to reach the desired result. Click **OK**.

## Advanced Formulas

**Nested Functions:** A nested function is when one function is tucked inside another function as one of its arguments, like this:

**=IF(D2>AVERAGE(B2:B10),1,0)**  
Initial Function      Nested Function

**IF:** Performs a logical test to return one value for a true result, and another for a false result.

**=IF(B2>69,"True","False")**  
logical\_test      value\_if\_true      value\_if\_false  
that can be      value to return      value to return  
evaluated as      when the test is      when the test is  
true or false      true      false

**AND, OR, NOT:** Often used with IF to support multiple conditions.

- AND** requires multiple conditions.
- OR** accepts several different conditions.
- NOT** returns the opposite of the condition.

**=OR(B5="MN",B5="WI")**  
logical1 the first      logical2 the second  
condition to evaluate      condition to evaluate

**SUMIF and AVERAGEIF:** Calculates cells that meet a condition.

- SUMIF** finds the total.
  - AVERAGEIF** finds the average.
- =SUMIF(C6:C10,"MN",D6:D10)**  
range of cells      criteria used to      calc\_range to  
you want to apply      determine what      calculate, if  
criteria against      cells to sum or      different than the  
average      range

## Advanced Formulas

**VLOOKUP:** Looks for and retrieves data from a specific column in a table.

	A	B	C	D	E
1				Agent Sales	
2				5	7367
3					
4	Agent ID	First	Last	Packages	Sales
5	1	Joel	Nelson	6	6,602
6	2	Louis	Hay	7	8,246
7	3	Anton	Baril	11	13,683
8	4	Caroline	Jolie	12	14,108
9	5	Daniel	Ruiz	6	7,367

**=VLOOKUP(D2,A4:E10,5)**

value to look for in the first column of the table      table from which to retrieve a value      col\_index the column number in the table from which to retrieve a value

**HLOOKUP:** Looks for and retrieves data from a specific row in a table.

**=HLOOKUP(B5,B2:I3,3)**

value to look for in the first row of the table      table from which to retrieve a value      row\_index the row number in the table from which to retrieve a value

**UPPER, LOWER, and PROPER:** Changes how text is capitalized.

**UPPER Case | lower case | Proper Case**

**=UPPER(B4)**

text to change case or capitalization

**LEFT and RIGHT:** Extracts a given number of characters from the left or right.

**=LEFT(B5,3)**

text from which to extract characters      num\_chars to extract from the left or right side of the text

**MID:** Extracts a given number of characters from the middle of text; the example below would return "day".

**=MID("Sunday",4,3)**

text from which to extract characters      start\_num the location of the first character to extract      num\_chars the number of characters to extract

**MATCH:** Locates the position of a lookup value in a row or column.

**=MATCH("Dog",B2:B10)**

lookup\_value to match in the lookup\_array      lookup\_array range of cells

**INDEX:** Returns a value or the reference to a value from within a range.

**=INDEX(A1:B5,2,2)**

array a range of cells      row\_num the row position      col\_num the column position (optional)

# CustomGuide

## Get More Free Quick References!

Visit [ref.customguide.com](http://ref.customguide.com) to download.



### Microsoft

[Access](#)  
[Excel](#)  
[Office 365](#)  
[OneNote](#)  
[Outlook](#)  
[PowerPoint](#)  
[Teams](#)  
[Word](#)

### Google

[Gmail](#)  
[Google Classroom](#)  
[Google Docs](#)  
[Google Drive](#)  
[Google Meet](#)  
[Google Sheets](#)  
[Google Slides](#)  
[Google Workspace](#)

### OS

[macOS](#)  
[Windows 10](#)

### Productivity

[Computer Basics](#)  
[Salesforce](#)  
[Zoom](#)

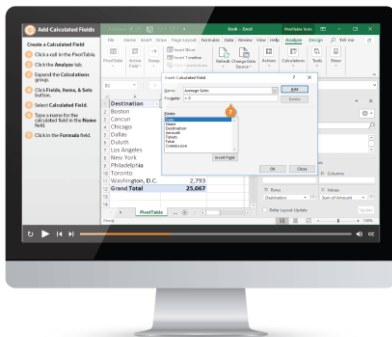
### Soft Skills

[Business Writing](#)  
[Email Etiquette](#)  
[Manage Meetings](#)  
[Presentations](#)  
[Security Basics](#)  
[SMART Goals](#)

+ more, including [Spanish versions](#)

## Loved by Learners, Trusted by Trainers

Please consider our other training products!



### Interactive eLearning

Get hands-on training with bite-sized tutorials that recreate the experience of using actual software. SCORM-compatible lessons.



### Customizable Courseware

Why write training materials when we've done it for you? Training manuals with unlimited printing rights!

## Over 3,000 Organizations Rely on CustomGuide



“The toughest part [in training] is creating the material, which CustomGuide has done for us. Employees have found the courses easy to follow and, most importantly, they were able to use what they learned immediately.”

Contact Us!

[sales@customguide.com](mailto:sales@customguide.com)

612.871.5004